

Vampire 600 V2 - 64 MB



The Vampire 600 V2 developer board.

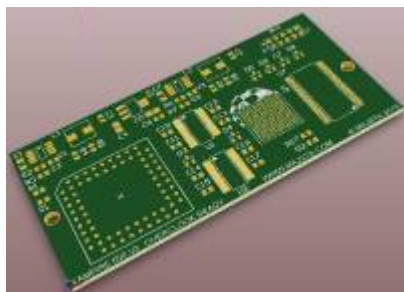
Signature

- **Target:** Amiga 600 (connects to the CPU socket)
- **Designer:** [Majsta](#)
- **Release Date:** Early 2015

Specifications

- **FPGA:** Altera Cyclone III
 - **CPU:** [Apollo 68080 Core](#)
 - **Memory:** 64 MB FastRAM
 - **Chipset:** [SAGA Core](#)
 - **Internal Ports:**
 - JTAG Socket
 - **External Ports:**
 - Digital Video Out
-

Gallery





You are here: [start](#) » [vampire](#) » [v600-v2-64](#)

From:
<http://wiki.apollo-accelerators.com/> - **Apollo Accelerators**

Permanent link:
<http://wiki.apollo-accelerators.com/doku.php/vampire:v600-v2-64>

Last update: **2020/08/02 12:37**

